

EasyOne[®] Air

Portable and PC Spirometer

EasyOne Air is a flexible, accurate and proven spirometry solution designed for healthcare providers large and small.



Features

- Large color touch screen
- Easy navigation
- Rechargeable battery
- Flexible use, consistent results
- Calibration free TrueFlow technology



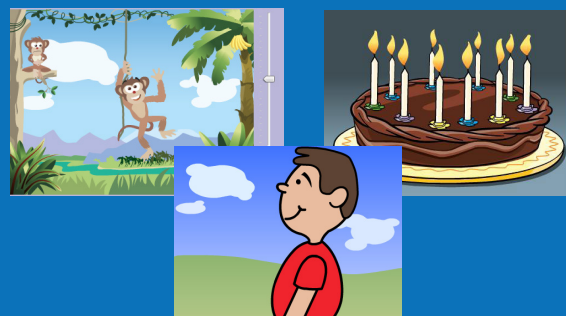
EasyOne Air comes equipped with EasyOne Connect software for EMR integration, PC spirometry and Bluetooth connectivity. This software offers one database and one platform for all EasyOne point-of-care solutions. Data management has never been easier.



Simple. Certain. Proven.



- Incentive screens
- Portable or PC mode
- Bluetooth connectivity
- Real-time curve display
- Real-time data transfer



TrueFlow
makes the difference

The only proven ultrasonic flow measurement; TrueFlow is highly accurate in all flow ranges, independent of gas composition, pressure, temperature and humidity. nnd TrueFlow is a hygienic and resistance-free solution that does not require calibration during its lifetime.



Specifications

Test Types FVC, FVL, SVC, MVV and Pre/Post Testing

Languages English, French, German, Spanish

Printing Options Direct to printer or with EasyOne Connect Software

EMR connectivity EasyOne Connect

Dimensions 3.4x6.1x1.4", 13 oz

Meets ATS/ERS 2005, OSHA and SSD requirements, FDA Approved

Part Numbers

5700683 EasyOne Air spirometry system

5700681 EasyOne Flow Tube box of 50

5700682 EasyOne Flow Tube box of 200

Learn more about EasyOne Air at www.henryschein.com
135 Duryea Road • Melville, NY 11747 • 800-772-4346